



WORKHOLDING AND AUTOMATION

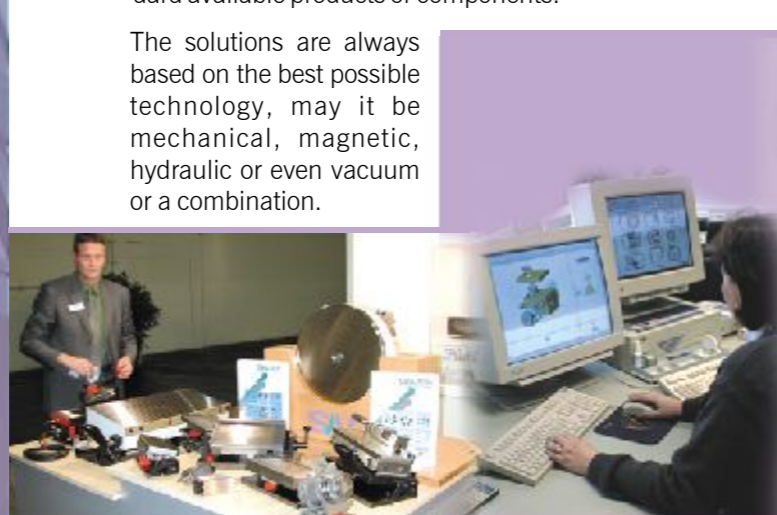
Workholding Products and solutions from one hand

### 1. Engineering and Development

The engineering and development team of SAV consists of a group of highly trained engineers, using state-of-the-art engineering and design tools to ensure professional and efficient results.

This ensures the most efficient solution for the customers application, whether it concerns a dedicated solution or an application using standard available products or components.

The solutions are always based on the best possible technology, may it be mechanical, magnetic, hydraulic or even vacuum or a combination.



### What do we do?

SAV is based on 3 main pillars that form its strong foundation.

### 3. Marketing and Sales

The marketing and sales activities of SAV are based on many years of close relationships with its main customers and can better be described as **co-makership**.



### What are we in ?

#### Tool & Apparatus Industry



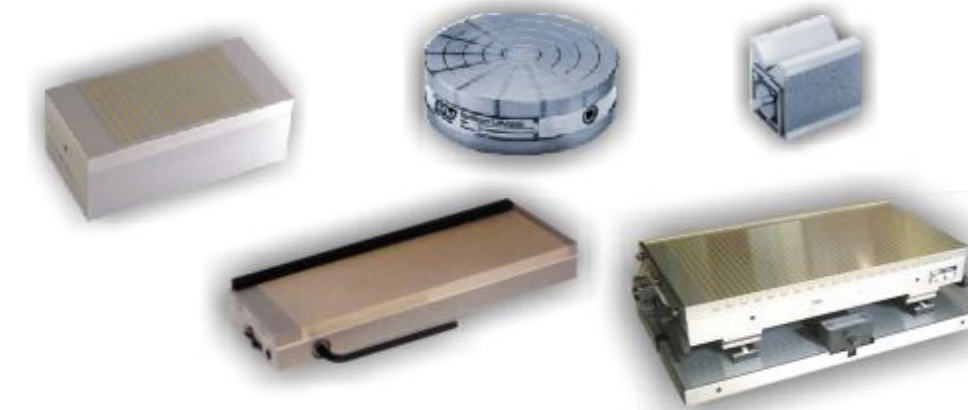
In this industry the most traditional applications for workholding can be found. Especially Grinding is an application where (magnetic) workholding has a history of over 100 years. Consequently workholding tools are considered industrial consumables that should be very economical in use but at the same time support the ever increasing **accuracy** requirements.

On this grinding experience new applications have been developed requiring even more accuracy or flexibility.

Examples are;

- Coordinate Grinding
- Spark Erosion
- HSC-Milling
- Angle Grinding

SAV has developed a range of products that are the best available for these applications, either for a standard set-up or for a more dedicated solution. In any case, accuracy, quality and cost control remain the standard for SAV.



Magnetic Products  
Sine Tables  
Precision Systems  
Lifting Products  
Pallets  
QMC-Products

### What do we make ?

#### Steel Construction Industry



Also in the Steel Construction Industry workholding becomes more and more important. Naturally Milling and Welding are known as very demanding applications. Conditions are severe and at the same time new efficient machining techniques require accurate, flexible and even more important, economic workholding solutions.

Apart from the traditional mechanical or hydraulic clamps SAV has developed different Magnetic solutions that can offer much higher accuracies

and better 5-side work piece approach, by applying modern Electropermanent workholding technology. This ensures quick work piece set-up and exchange and thus clear cost advantages.

SAV can offer a wide range of products to support these applications, including;

- measuring supports
- loading and unloading clamps
- demagnetizing tools.



#### Palletising & Automation



In the Tool and Mould Industry and other steel processing applications, workholding tools are used on different machines. More and more pallet systems are applied for this. Integration of zero-reference systems on machines offers the following advantages;

- Reduced loading and unloading time
- Reduced machine down time
- Increased productivity
- Increased accuracy
- Enhanced machine capacity
- Increased competitiveness

Most zero-reference systems and workholding tools are supplied by different manufacturers with limited compatibility. This makes it difficult for customers to make the right choice for their workholding problem.

SAV has developed a unique concept in which the tool and the pallet are integrated to fit any available system. This results in an economic, cost effective and accurate integration in the customer's production set-up, e.g.

- EDM
- HSC-Milling
- Measuring



#### Quick Die & Mould Change

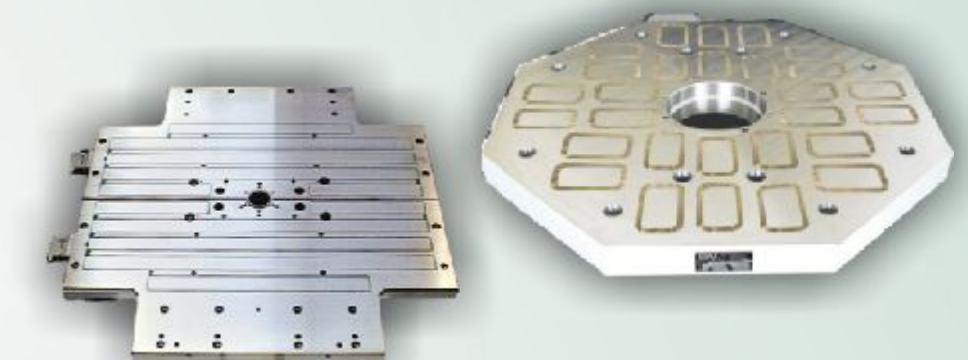


The Plastic and Rubber Industry are increasingly confronted with smaller batch sizes and shorter delivery times, forcing their production to more frequent and costly mould changes.

Quick Mould Change (QMC) solution can offer significant increased flexibility and thus productivity.

SAV can offer its **QMC-mag** products, ensuring quicker, simpler and safer **magnetic** Mould or Die change.

With the integrated safety features and a wide range of accessories customers can have a dedicated and innovative solution for their mould change.



### 2. Manufacturing

In her two manufacturing plants SAV utilises an extensive range of different machines for her production. In order to reach the high demanding accuracy levels, the machines are naturally of the highest available technology and comprise modern CAM programmable CNC operated machines for a.o. 3 to 5 axe machining, electrical discharge machining (EDM) and high precision grinding up to 4m length.

#### SAV Manufactures:

- Standard Workholding Products
- Special Workholding Solutions
- High Precision Systems

This has always proved to be the best approach to stay close to the applications and monitor the difficulties that customers and their operators face during their manufacturing process. Consequently contacts with SAV's customers are kept on different levels.

The best of SAV's innovative engineers are available to the sales department to support application questions of customers and to offer practical solutions.

In order to support the world wide marketing of her products SAV has established International Sales Organisations in the Netherlands and in the Czech Republic. Through these organisations SAV can ensure quick and efficient support to agents, distributors and machine manufacturers throughout the world.



WORKHOLDING AND AUTOMATION

WORKHOLDING PRODUCTS AND SOLUTIONS FROM ONE HAND