

What do we make ?

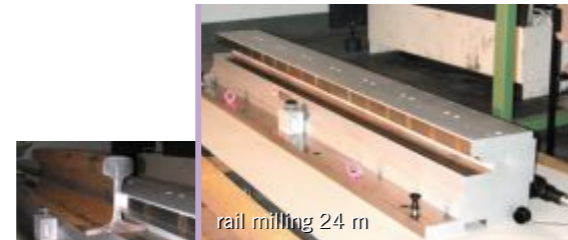
Magnetic Products
Sine Tables
Precision Systems
Lifting Products
Pallets
QMC-Products



- SAV develops solutions for high demanding and precise applications
- SAV utilizes a high level of in-house production



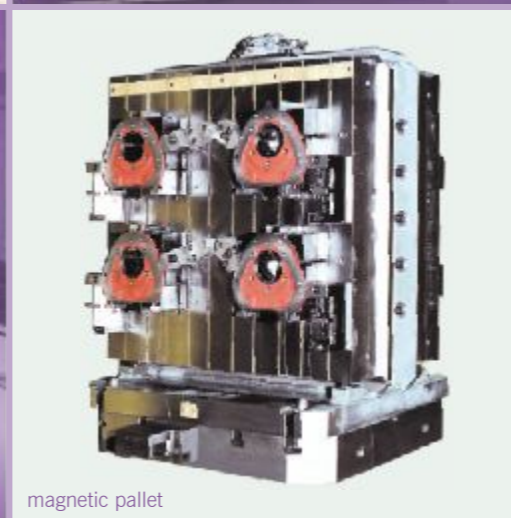
sine table 12 m



rail milling 24 m



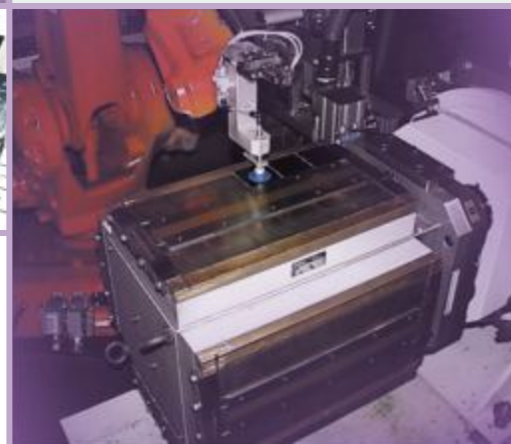
hard milling



magnetic pallet



magnetic / hydraulic / mechanical / vacuum clamping system 3000 x 1200 mm



© OTTO-DESIGN 2004



Nuremberg: Group management, Sales, Stock, Engineering, Production

Mittweida: Engineering, Production

Headquarters:
SAV Spann- Automations- Normteiletechnik GmbH
 Schiessplatzstraße 36-38
 D-90469 Nuremberg
 Germany

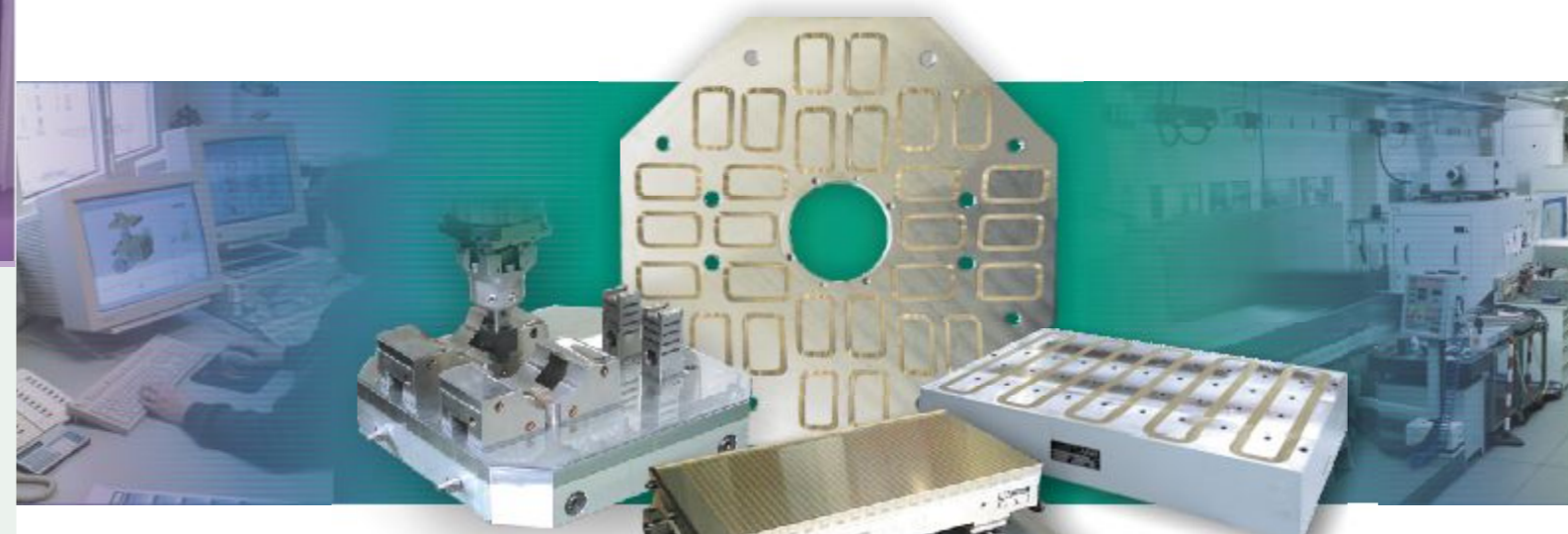
International Sales and Marketing by
SAV Workholding and Automation
 Van Speykstraat 2-d
 3262 PV Oud-Beijerland – Rotterdam
 The Netherlands

Tel.: +31-186-626 469
 Fax: +31-186-627 153

e-mail: info@sav-workholding.com
 Internet: www.sav-workholding.com

SAV CZECH spol. s r. o.
 Kotojedy 56
 767 01 Kromeriz
 Czech Republic

Tel./ Fax: +420-573-33 14 56
 e-mail: sav.czech@sav-workholding.com



COMPANY-PROFILE

WORKHOLDING PRODUCTS AND SOLUTIONS FROM ONE HAND

INNOVATION
PRECISION
EFFICIENCY



Who are we ?

SAV is a manufacturer and supplier of machine tool accessories and automation with a strong emphasis on **Quality, Precision and Cost Control.**

With its roots in the traditionally strong and world leading German tooling industry, SAV developed a unique concept of workholding solutions, standard products and components that can be applied in many different applications.



The founders of SAV combined their decades of experience in this field with a new market oriented marketing and development concept, ensuring quick development and market introduction to accommodate the ever changing demands of its different customers.

SAV is now one of the leading manufacturers and suppliers of workholding solutions in Europe and is extending its business throughout the world. Among her customers are strong and well known Automotive Industries, leading machine tool manufacturers and distributors but also a variety of end users.

SAV has a strong emphasis on innovation, new technologies and applications.

With her head quarters in Nuremberg, Germany, her manufacturing plants in Nuremberg and Mittweida, SAV can sustain a high level of operational excellence, from development to quick delivery and commissioning.

The philosophy of SAV ensures her customers;

- a workholding solution rather than just a tool
- a manufacturing partner rather than just a tool supplier

