



WORKHOLDING AND AUTOMATION

## POWER-MAGNET CIRCULAR PALLET

SAV 220.36

**Material:**

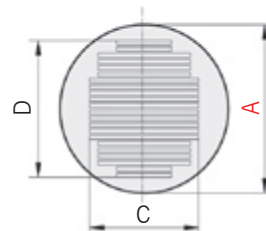
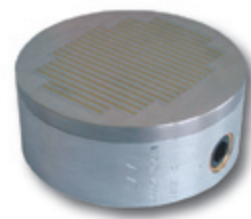
Aluminium base with St 37 /  
stainless steel pole plate

**Application:****Technical Specifications:**

- Holding force: 140 N/cm<sup>2</sup>
- Magnetic field height: 4 mm
- Pole plate wearing limit: 3 mm

System	Diameter (mm)	Thickness (mm)	Active Section (mm)		Weight (kg)
	<b>A</b>	<b>B</b>	<b>C</b>	<b>D</b>	
150	100	65	48	71	3.4
150	125	65	87	88	4.1
150	160	65	104	133	5.0
150	180	65	124	136	6.8
150	200	65	134	161	8.4
150	250	65	180	210	10.3

∅ 160  
with ITS 148  
+ adapter plate 9.3 kg



**Ordering example:** Power-Magnet Circular Pallet SAV 220.36 - 16 - Reference system\*  
**Ordering key:** Name SAV - No. - A - Reference system\*

## MAGNET CIRCULAR BALL PALLET

SAV 220.39

**Material:**

Ball hard plastic / housing aluminium

Execution of permanent magnet (PE):

- Pole plate St 37 / Brass

Execution of power magnet (PO):

- Pole plate St 37 / stainless steel (V4A)

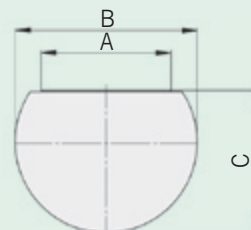
**Application:**

Polishing, measuring, assembling,  
laserwelding.

**Technical Specifications:**

Optimal approach to workpiece  
by setting in desired position.

System	Dimensions (mm)			Weight (kg)	Holding power (N/cm <sup>2</sup> )	Pole pitch (mm)	Magnet field height (mm)
	<b>A</b>	<b>B</b>	<b>C</b>				
PE	100	140	110	3	80	11	10
PO	100	140	110	3	140	6	10

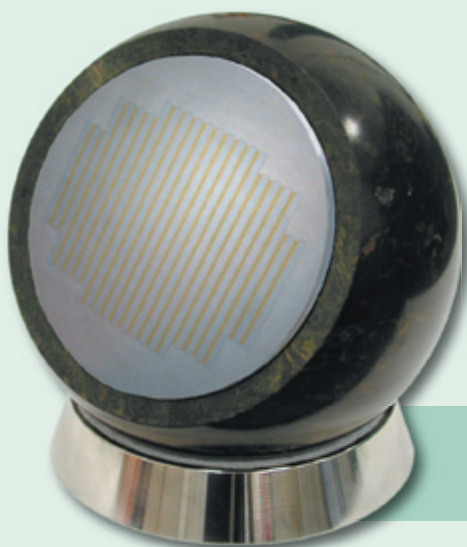


**Ordering example:** Magnet Circular Pallet SAV 220.39 - PE  
**Ordering key:** Name SAV - No. - Type



WORKHOLDING AND AUTOMATION

APPLICATION EXAMPLES

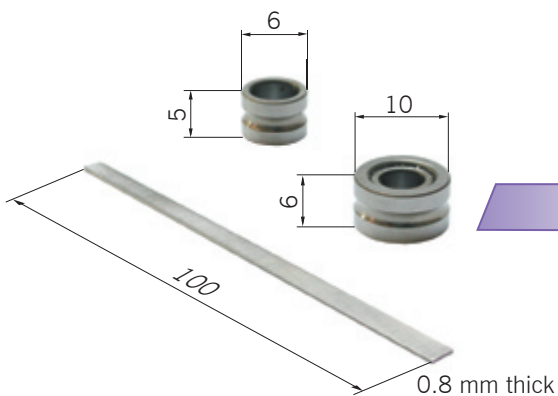


Pallet type:  
Magnet circular ball pallet  
SAV 220.39 PE

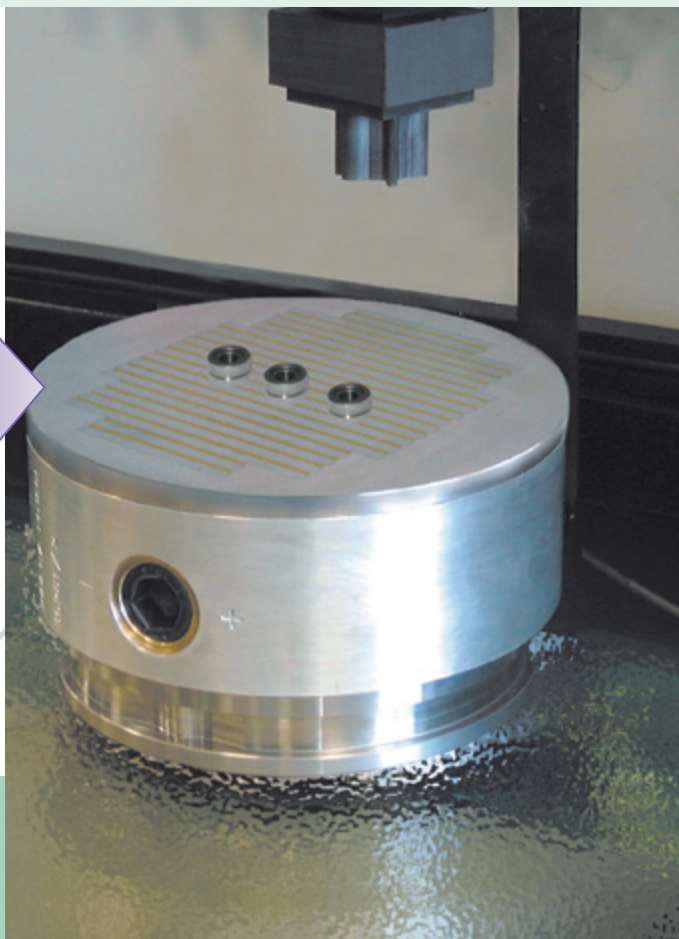


Pallet type:  
Magnet circular ball pallet  
SAV 220.39 PO

Also suitable for small parts



\*Please specify reference system and adaption.  
We can advice!



Application:  
POWER Magnet Circular Pallet  
SAV 220.36 - 160 - Reference system\*

