



WORKHOLDING AND AUTOMATION

SCREW-THREADED PALLET

SAV 220.10

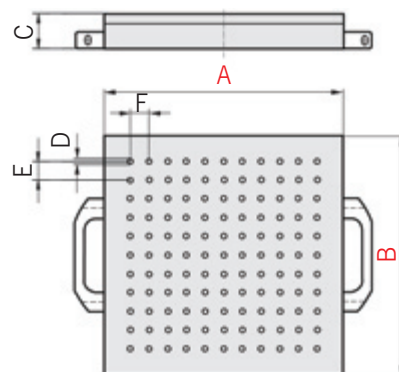
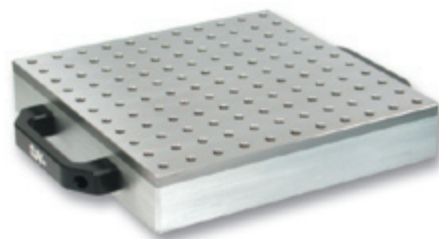
Material:

Aluminium base with screwed-on hardened and stainless steel top plate with threaded screw holes.

Application:**Technical Specifications:**

- Parallelism: < 0.02 mm
- Top plate: hardened
- Holding elements SAV 204.04 available on request (page 22)

System	Dimensions (mm)			Threaded holes (mm)	Threaded holes grid (mm)		Threaded holes	Weight (kg)
	A	B	C		D	E		
200	200	200	42	M 8	25	25	49	7.8
240	240	240	42	M 8	25	25	81	11.0
280	280	280	44	M 8	25	25	81	15.0
320	320	320	52	M 8	25	25	121	22.0
320	320	160	52	M 8	25	25	55	10.5
480	480	280	50	M 8	50	50	162	29.0
650	650	340	57	M 8	50	50	242	43.0



Ordering example: Screw threaded pallet SAV 220.10 - 320 x 320 - Reference system* - Adaptation*

Ordering key: Name SAV-No. - A x B - Reference system* - Adaptation*

SECTIONED T-SLOT PALLET

SAV 220.20

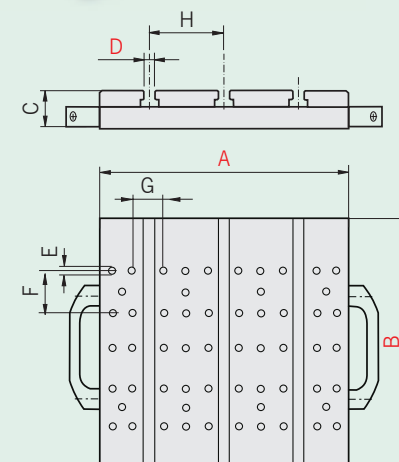
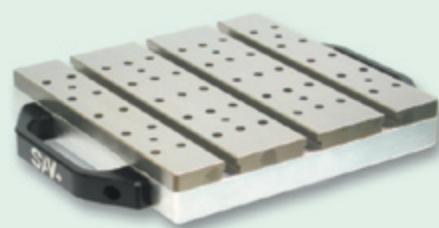
Material:

Aluminium base with screwed-on hardened and stainless steel section top plates.

Application:**Technical Specifications:**

- Parallelism: < 0.02 mm
- Top plate: section plates hardened
- Holding elements SAV 204.04 available on request (page 22)
- Threaded holes grid 50 x 50 mm (F and G)

System	Dimensions (mm)			Dimensions T-slots (mm)			Threaded holes (mm)	Threaded holes grid (mm)		T-slots grid (mm)	Sections	Weight (kg)
	A	B	C	D H8				E	F			
200	200	200	40	6	8	10	M 8	50	50	90	3	8.0
240	240	240	43	6	8	10	M 8	50	50	70	4	9.5
280	280	280	45	6	8	10	M 8	50	50	70	5	14.1
320	320	320	52	6	8	10	M 8	50	50	75	5	22.0
320	320	160	52	6	8	10	M 8	50	50	75	5	9.5
480	480	280	50	6	8	10	M 8	50	50	70	8	25.0
650	650	340	57	6	8	10	M 8	50	50	85	10	46.5



Ordering example: Sectioned T-Slot Pallet SAV 220.20 - 320 x 320 - 6 - Reference system* - Adaptation*

Ordering key: Name SAV - No. - A x B - D - Reference system* - Adaptation*

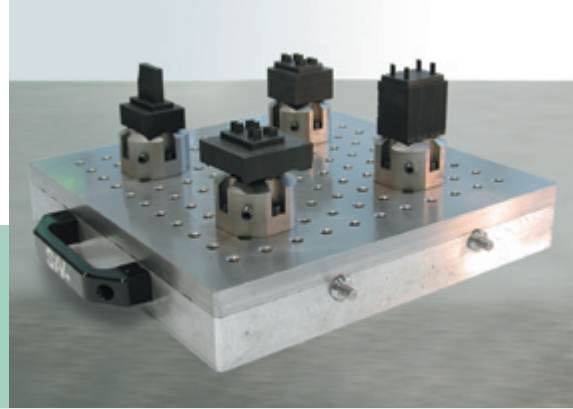
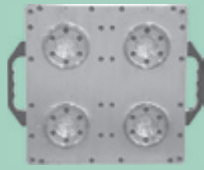


WORKHOLDING AND AUTOMATION

APPLICATION EXAMPLES

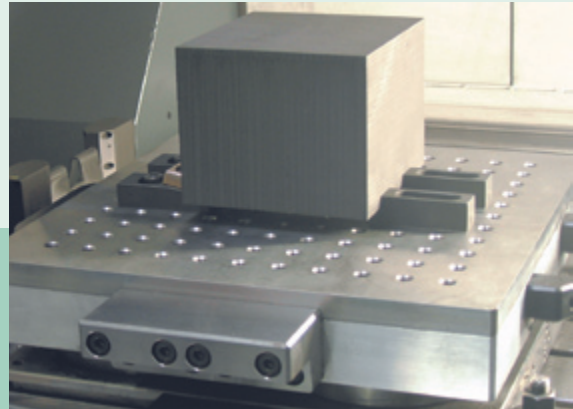
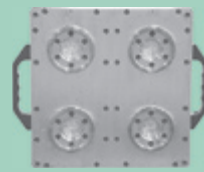
Pallet type:
Screw Threaded Pallet

SAV 220.10 - 320 x 320
Reference system*
with SAV 581.07 - UEH



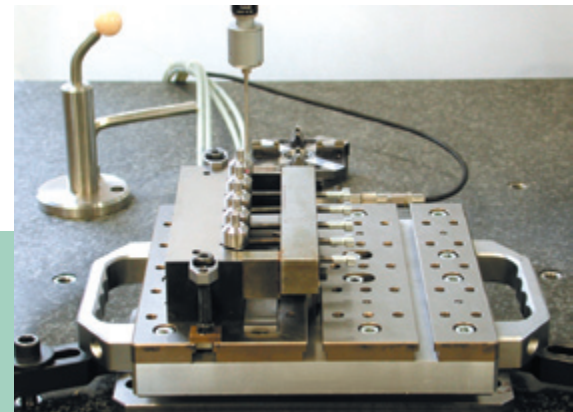
Pallet type:
Screw Threaded Pallet

SAV 220.10 - 320 x 320
Reference system*



Pallet type:
Sectioned Pallet

SAV 220.20 - 280 x 280
Reference system*



*Please specify reference system and robot adaption;
we can advise!

Pallet type:
Sectioned Pallet

SAV 220.20 - 240 x 240
Reference system*

