



WORKHOLDING AND AUTOMATION

T-SLOT MECHANICAL CLAMP, SINGLE

SAV 204.04

Material:

Stainless tool steel, hardened

Application:

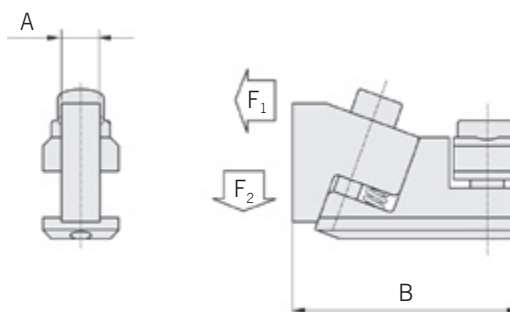
For single sideways clamping of very low workpieces for EDM

**Technical Specifications:**

Complete with nut and clamping piece



System	Width (mm)	Length (mm)	F ₁ (kN)	F ₂ (kN)	Weight (kg)
6 - E	5.6	ca. 32	2.5	0.3	0.3
8 - E	7.6	ca. 36	3.2	0.4	0.5
10 - E	9.6	ca. 40	4.0	0.5	0.7



Ordering example: T-Slot Mechanical Clamp SAV 204.04 - 10 - E

Ordering key: Name SAV-No. - System - Single

T-SLOT MECHANICAL CLAMP, DOUBLE

SAV 204.04

Material:

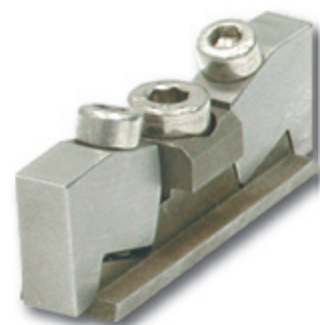
Stainless tool steel, hardened

Application:

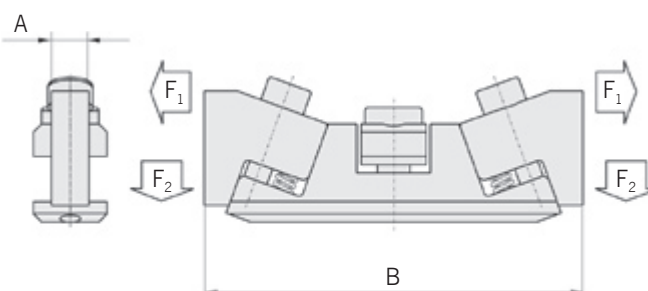
For double sideways clamping of very low workpieces for EDM

**Technical Specifications:**

Complete with nuts and clamping pieces



System	Width (mm)	Length (mm)	F ₁ (kN)	F ₂ (kN)	Weight (kg)
6 - D	5.6	ca. 50	2.5	0.3	0.5
8 - D	7.6	ca. 54	3.2	0.4	0.7
10 - D	9.6	ca. 58	4.0	0.5	0.9



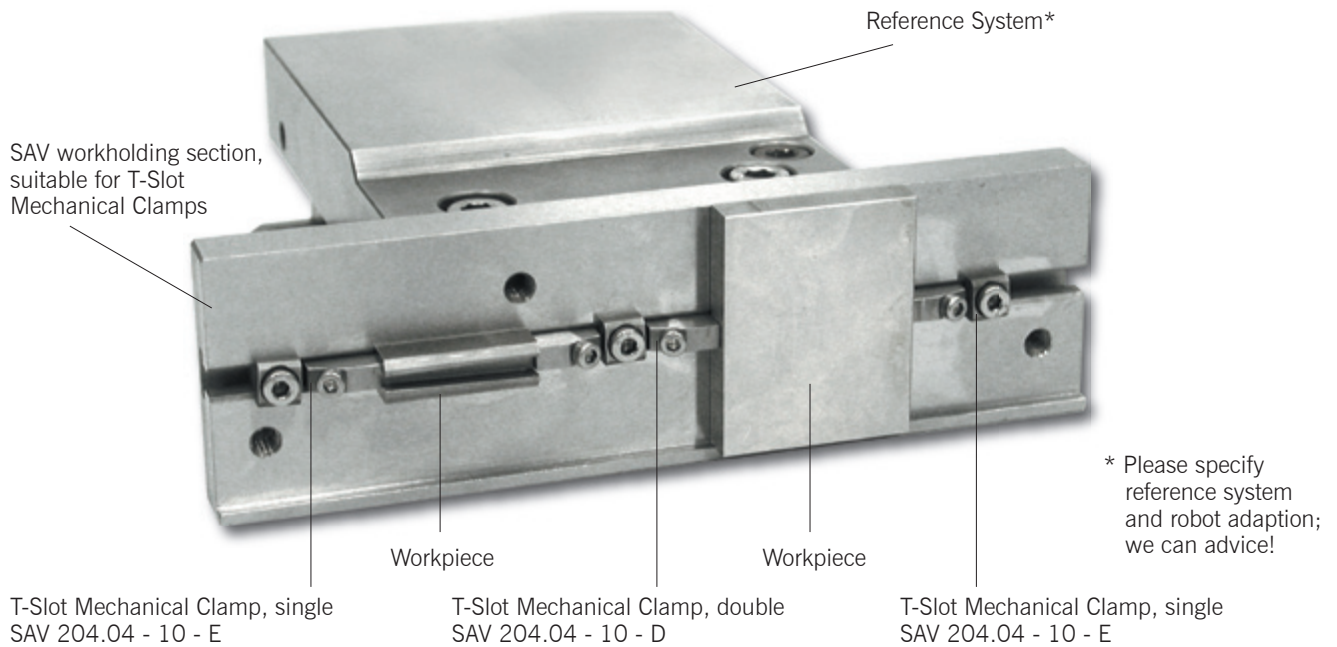
Ordering example: T-Slot Mechanical Clamp SAV 204.04 - 10 - D

Ordering key: Name SAV-No. - System - Double



WORKHOLDING AND AUTOMATION

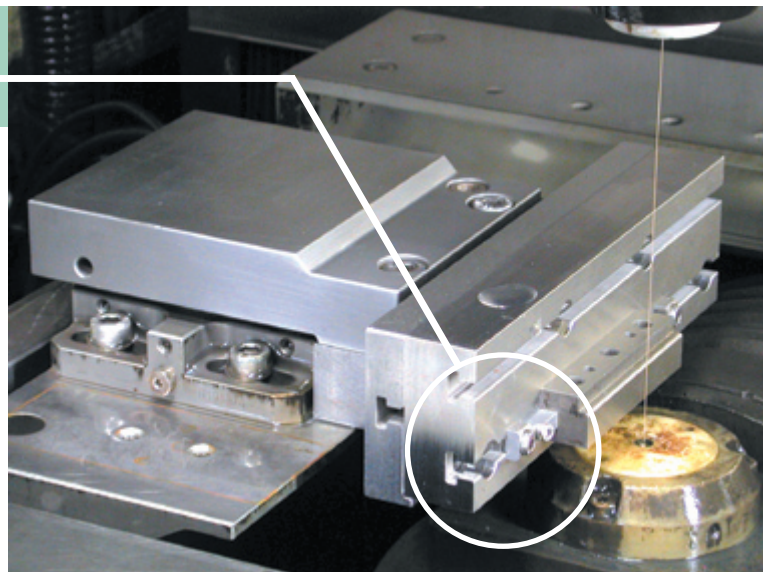
APPLICATION EXAMPLES



Execution:
T-Slot Mechanical Clamp, single

SAV 204.04 - 10 - E

Application of SAV workholding section in wire EDM



Execution:
T-Slot Mechanical Clamp, single

SAV 204.04 - 10 - E

