



WORKHOLDING AND AUTOMATION

## PRECISION 3-JAW-CHUCK

SAV 260.11

**Material:**

Stainless steel, jaws and chuck hardened

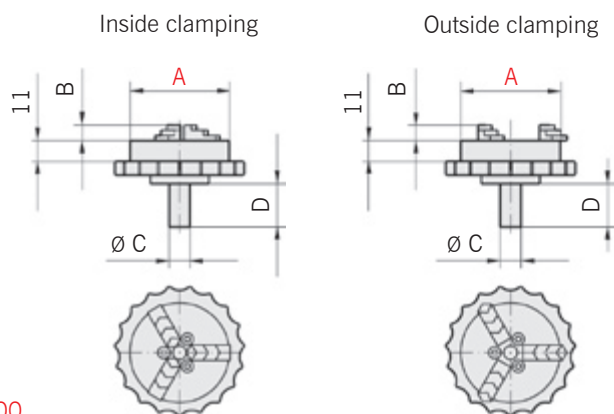
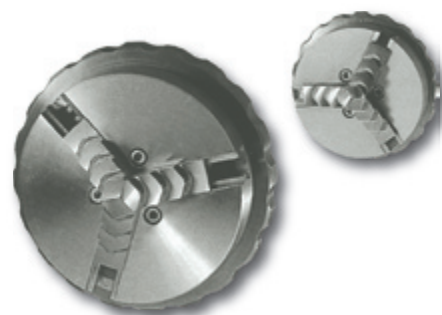
**Application:****Technical Specifications:**

- Precision ground
- High rotation accuracy and repeatability at low holding force
- Rotation accuracy with testing pin of 10 mm diameter; < 0.03 mm
- Suitable for thin ring shaped workpieces
- Workpiece clamping by manual rotation of the setting ring, without key
- Clamping repeatability < 0.005 mm
- When ordering replacement Jaws, these will be supplied in pre-manufactured accuracy.

Dimensions (mm)				Clamping range (mm)		Weight (kg)
A	B	C	D	Inside clamping	Outside clamping	
58	9	12	25.0	min. 0.5 max. 10	min. 16 max. 49	0.25
100	9	18	37.5	min. 1.0 max. 29	min. 21 max. 86	

Ordering example: Precision 3-Jaw-Chuck SAV 260.11 - 100

Ordering key: Name SAV - No. - Diameter



## HOLDING BLOCK

SAV 260.11 - B

**Material:**

Compact holding block made of stainless steel, precision ground and with hardened surfaces.

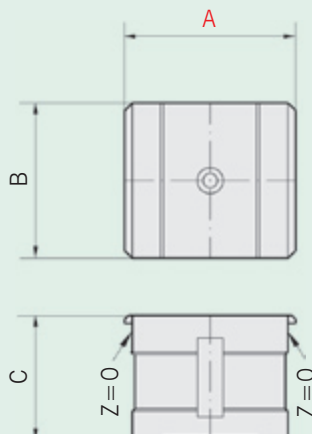
**Application:**

- Used on EDM frames and for grinding

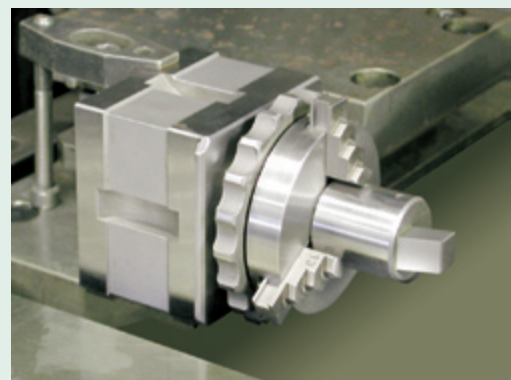
**Technical Specifications:**

- Clamping repeatability < 0.05 mm
- Can be used in combination with Precision 3-Jaw-Chuck SAV 260.11 sizes 58 and 100

Dimensions (mm)			Weight (kg)
A	B	C	
58	58	48	1.2
100	100	65	4.8



Execution:  
Holding block SAV 260.11 - B  
with Precision 3-Jaw-Chuck SAV 260.11



Ordering example: Holding Block SAV 260.11 - B - 100

Ordering key: Name SAV - No. - B - Execution