



WORKHOLDING AND AUTOMATION

## ELECTRODE UNI FIXTURE

SAV 581.07 – UEH

### Material:

Stainless tool steel, hardened

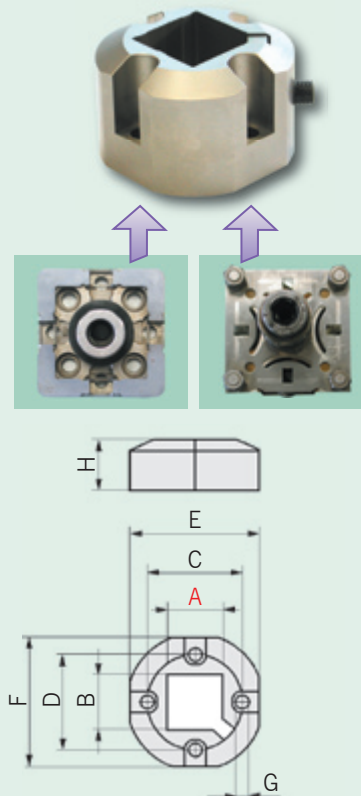
### Application:

For EDM and milling of electrodes or other square slotted workpieces

### Technical Specifications:

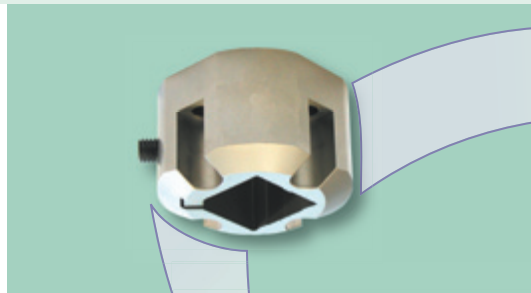
- On request adjusted to your reference system
- Suitable for mounting on multiple-pallets and single mounting

Dimensions (mm)								Weight (kg)
A	B	C	D	E	F	G	H	
15	15	43	43	27	27	∅ 6.6	36	0.40
25	25	43	43	27	27	∅ 6.6	36	0.45

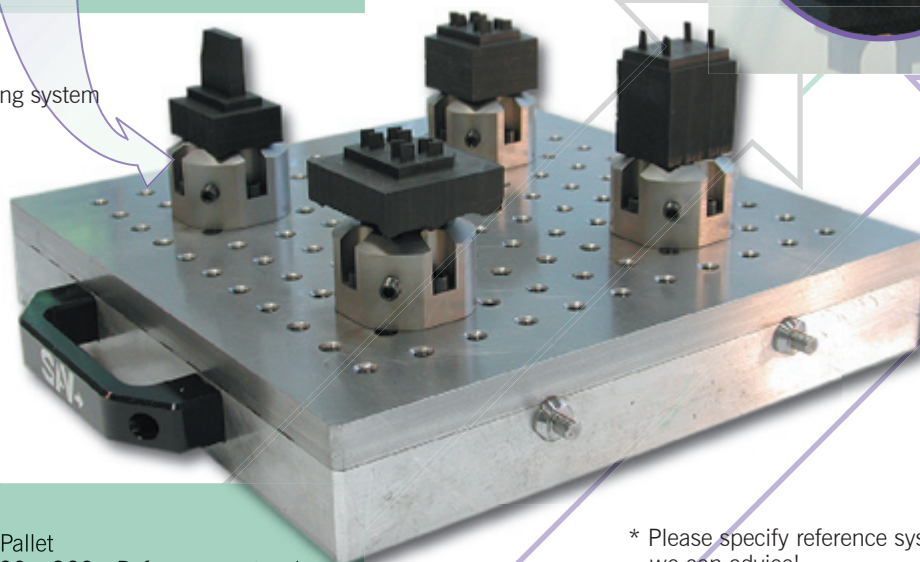


Ordering example: **Electrode Uni Fixture SAV 581.07 - UEH - 15**

Ordering key: Name SAV - No. - Type - A



Adaption to the electrode clamping system is possible



Execution:  
Screw-threaded Pallet  
SAV 220.10 - 320 x 320 - Reference system\*  
Electrode Uni Fixture  
SAV 581.07- UEH - A

\* Please specify reference system and robot adaption; we can advice!