



WORKHOLDING AND AUTOMATION

COLLET ELECTRODE FIXTURE

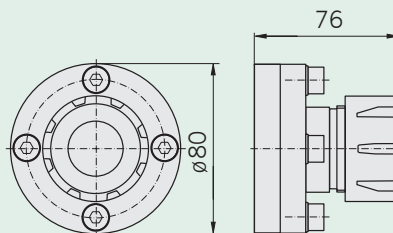
SAV 581.07 – ZEH

Material:

Stainless tool steel, hardened

Application:**Technical Specifications:**

- Collet fixture with adapter flange and reference system aligned
- Collet fixture suitable for collet SAV 439.67-470E or exchange set SAV 581.07-WS
- Supplied with cone for chuck type Schaublin No. 470E according DIN 6499 shape ER32
- Supplied with adapter flange diameter 80 mm aligned



Ordering example: Collect Electrode Fixture SAV 581.07 - ZEH

Ordering key: Name SAV -No. - Type

ELECTRODE FIXTURE

SAV 581.07 – WEH

Material:

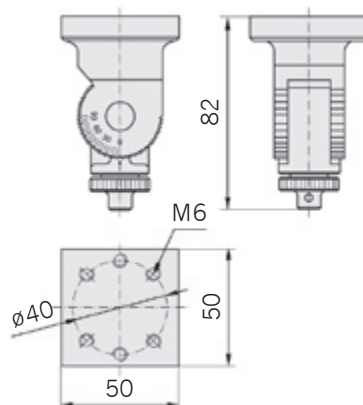
Stainless tool steel, hardened

Application:

Adaption with fixture to the machining head for spark erosion.

Technical Specifications:

- Supplied either with or without sine function
- Supplied including exchange set SAV 581.07 - W, excluding collet



Ordering example: Electrode Fixture SAV 581.07 - WEH

Ordering key: Name SAV-No. - Type

COLLET

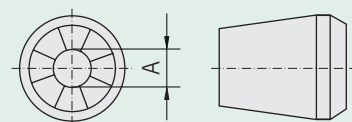
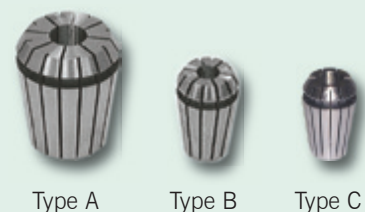
SAV 439.67

Material:

Stainless tool steel, hardened

Technical Specifications:

- Double cone collet supplied with Schaublin System / Regofix according DIN 6499
- Type A: Form 470 E
Clamping range from diam. 4.0 to 20.0 mm in 1.0 mm steps
Clamping range from diam. 2.0 to 3.0 mm in 0.5 mm steps
- Type B: Form 426 E
Clamping range from diam. 4.0 to 10.0 mm in 1.0 mm steps
Clamping range from diam. 2.0 to 3.0 mm in 0.5 mm steps
- Type C: Form 4008 E
Clamping range from diam. 4.0 to 7.0 mm in 1.0 mm steps
Clamping range from diam. 2.0 to 3.0 mm in 0.5 mm steps
- Collets can be supplied as set, from diameter 3.0 mm to 18.0 mm



Ordering example: Collet SAV 439.67 - 470 E - Set

Ordering key: Name SAV-No. - Type or Set