

## Permanent Magnetic Circular Chuck

SAV 244.06

With radial pole arrangement

**Use:**

For cylindrical and ring-shaped workpieces.

**Features:**

High holding force. Concentric grooves to simplify workpiece alignment. Through hole possible up to maximum diameter D. Supplied as standard without through hole in centre. Central region (diameter C) not magnetically active. Available with flange on request (SAV 248.90 to 248.94, see chapter 06).

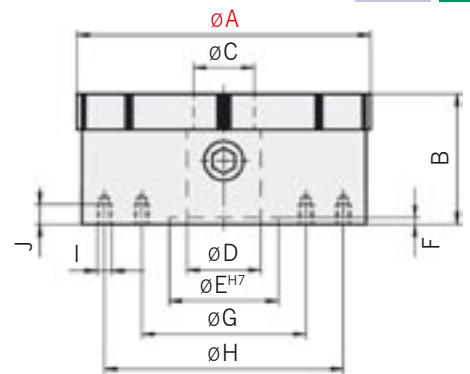
For additional top plates see 248.05

Nominal holding force: 100 N/cm<sup>2</sup>

Pole plate wearing limit:

5 mm (for A = 150 to 300 mm)

10 mm (for A = 350 to 400 mm)



Dimensions in mm											Number of poles	Weight in kg
A	B <sub>-2</sub> <sup>+9.5</sup>	C	D	E	F	G	H	I	J			
100	48	14	-	51	6	76	-	M6	8	6	2.6	
130	57	16	20	50	5	100	-	M6	10	10	5.7	
150	57	20	24	50	5	80	120	M6	8	10	6.5	
200	57	28	30	60	5	110	180	M6	8	12	13.0	
250	70	30	50	80	5	140	220	M6	8	16	20.0	
300	73	40	58	150	6	180	260	M8	10	16	30.0	
350	73	40	58	170	6	220	300	M8	12	20	49.0	
400	75	40	58	200	8	260	340	M8	12	20	75.0	

Ordering example: Permanent Magnetic Circular Chuck SAV 244.06 - 400

Ordering key: Name SAV - No. - A

## Neodymium Magnetic Circular Chuck

SAV 244.07

For difficult workpieces, with parallel pole arrangement, P=6 mm

**Use:**

For workpieces that are particularly difficult to clamp, such as ferrotic and hard metals containing cobalt, as well as very small workpieces.

**Features:**

Aluminium housing, pole plate made from tool steel. Extremely high holding force through a specially developed construction using neodymium-iron-boron magnets.

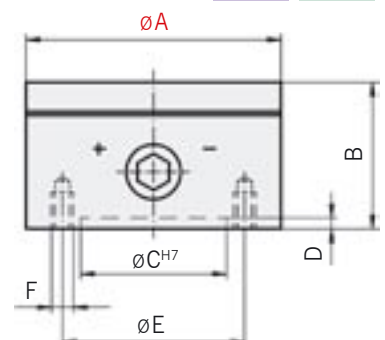
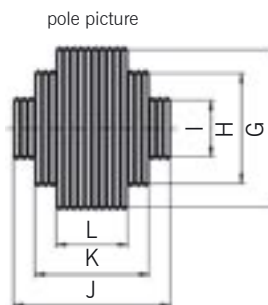
Available with flange on request (SAV 248.90 to 248.94, see chapter 06).

Nominal holding force: 180 N/cm<sup>2</sup>

Magnetic field height: 10 mm

Pole plate wearing limit: 3 mm

Max. revolutions: 200 r.p.m.



Dimensions in mm												Weight in kg
A	B <sub>-2</sub> <sup>+9.5</sup>	C	D	E	F	G	H	I	J	K	L	
100	65	70	4	90	M6 (4x)	-	-	48	-	-	74	2.0
125	65	95	4	110	M8 (4x)	-	88	54	-	98	67	3.0
160	65	125	4	140	M10 (4x)	-	104	54	-	134	61	4.5
180	65	125	4	160	M10 (4x)	124	84	64	134	97	61	6.5
200	65	125	4	180	M10 (4x)	134	104	74	158	110	73	8.5

Ordering example: Neodymium Magnetic Circular Chuck SAV 244.07 - 160

Ordering key: Name SAV - No. - A