



WORKHOLDING AND AUTOMATION

Permanent Magnetic Circular Chuck

SAV 244.08

With parallel pole arrangement

Use:

Clamping of medium and large workpieces.
For light turning.

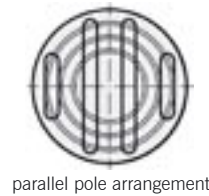
Features:

Robust construction. Holding force continuously variable. Concentric grooves to simplify alignment of the workpieces. Available with flange on request (SAV 248.90 to 248.94, see chapter 06). For additional top plates see 248.06.

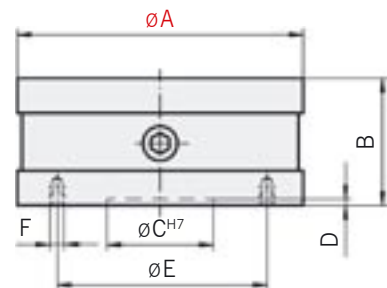
Nominal holding force 80 N/cm²
Magnetic field height: 15 mm
Pole plate wearing limit: 10 mm

A	Dimensions in mm					Weight in kg
	B _{+0.5}	C	D	E	F	
150	52	100	6	120	4 x M6	6.0
180	52	100	6	120	4 x M6	8.0
200	52	120	6	150	4 x M6	11.0
250	70	120	8	230	3 x M10	19.0
300	70	120	8	270	3 x M10	27.0
350	70	120	8	270	3 x M10	46.0
400	75	120	8	270	3 x M10	63.0
450	75	120	8	270	3 x M10	112.0
500	80	120	8	270	3 x M10	150.0
600	80	120	10	270	3 x M10	200.0

Ordering example: Permanent Magnetic Circular Chuck SAV 244.08 - 300
Ordering key: Name SAV - No. - A



parallel pole arrangement



Permanent Magnetic Circular Chuck

SAV 244.10

Switchable

Use:

As an auxiliary magnet to be used on a circular chuck for holding smaller, delicate workpieces. Also suitable for fixtures and as a holding magnet.

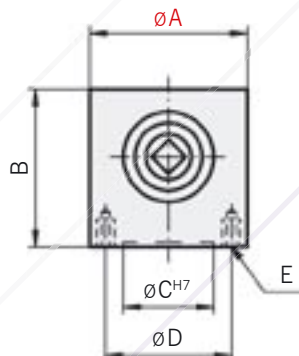
Features:

Switchable permanent magnet,
holding surface on the upper face.

Pole arrangement:

$\varnothing 50$ mm 1.5 mm brass / 6 mm steel,
 $\varnothing 80$ mm 2 mm brass / 8 mm steel

A	Dimensions in mm				Nominal holding force in N	Weight in kg
	B _{+0.5}	C	D	E		
50	50	25	35	4 x M5	85	0.7
80	65	50	60	4 x M6	500	2.2



Ordering example: Permanent Magnetic Circular Chuck SAV 244.10 - 80
Ordering key: Name SAV - No. - A

