

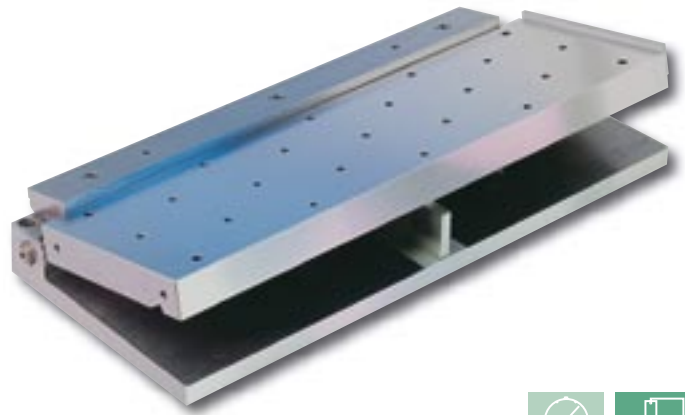
## Precision Sine Table

SAV 235.71

Swivel on longitudinal axis, with tapped holes or T-slots

**Design:**

Swivel on the longitudinal axis.  
 The base plate of the sine table is made of hardened steel (HRC 60), black-finished and precision ground.  
 Swivelling table available with tapped holes M8 (G) or with T-slots (from size 400 x 200) against price adder (T).  
 Mechanical angle setting available against price adder; however, total height will increase with approx. 40 mm at 0° setting.  
 The sine tables are supplied in wooden storage cases upto and including size 450 x 150.  
 With setting table degrees / minutes in mm.

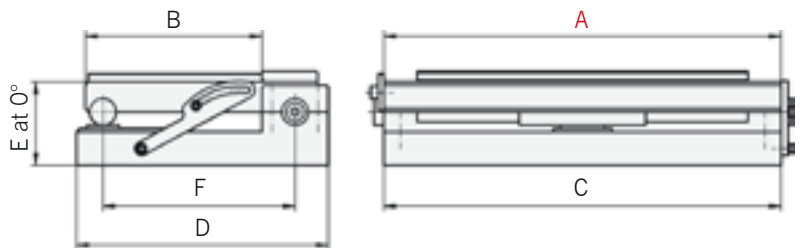


Angle precision: ± 5 sec.  
 Planar parallelism: ± 0.005 / 100 mm  
 Shimming measure at 0°: 3 mm  
 Angle range: 0° to 45°



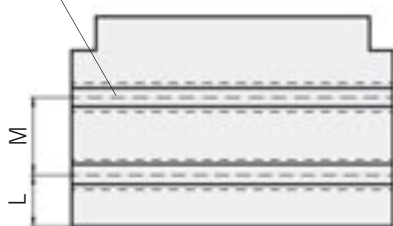
**Application:**

The angle is set according the sine principle, using an end-gauge.  
 Depending on workpiece, a precision grinding vice or alternatively a switchable permanent magnetic chuck can be mounted on the swivel plate.



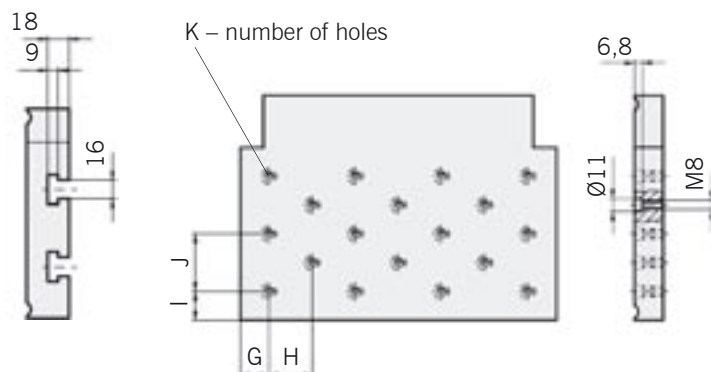
Swivel plate with T-slots (T)

N – number of slots



Swivel plate with tapped holes (G)

K – number of holes



Dimensions in mm														Weight in kg
A	B	C	D	E	F	G	H	I	J	K	L	M	N	
250	150	250	195	52	145	25	25	25	50	23	-	-	-	14.0
350	150	350	195	60	145	25	25	25	25	33	-	-	-	26.0
400	200	400	245	60	215	25	25	25	25	53	50	100	2	37.0
450	150	450	195	60	165	25	25	25	25	43	35	80	2	33.5
500	200	500	245	65	215	25	25	25	25	67	50	100	2	48.5
600	300	600	345	70	285	25	25	25	25	127	50	100	3	90.0

Ordering example: Precision Sine Table SAV 235.71 - 600 - G  
 Ordering key: Name SAV - No. - A - Execution