

Precision Sine Table

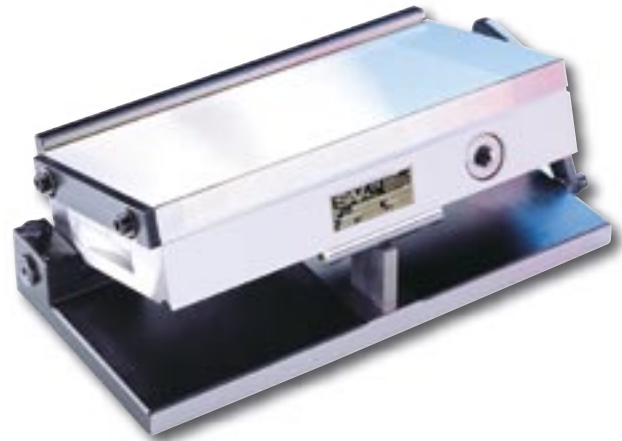
SAV 245.01

Swivel on longitudinal axis, with fine pole chuck

Design:

Swivel on the longitudinal axis. The base plate of the sine table is made of hardened steel (HRC 60), black-finished and precision ground.

High accuracy due to extreme flat construction. Standard execution with permanent magnetic chuck. The sine tables are supplied in wooden storage cases up to and including size 450 x 150. With setting table degrees / minutes in mm. Sine table and magnetic chuck also available in stainless steel execution (RF) in sizes 150 x 100 / 200 x 100 / 250 x 150 / 300 x 150.



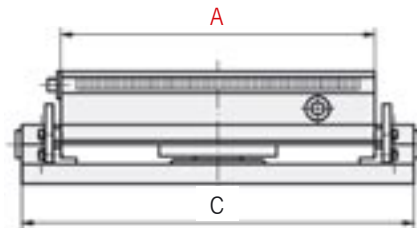
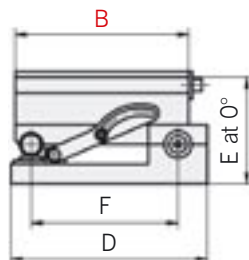
| | |
|---------------------------|----------------------|
| Angle precision: | ± 5 sec. |
| Planar parallelism: | ± 0.005 / 100 mm |
| Shimming measure at 0°: | 3 mm |
| Angle range: | 0° to 45° |
| Nominal holding force: | 80 N/cm ² |
| Pole pitch: | 1.9 mm |
| Magnetic field height: | 6 mm |
| Pole plate wearing limit: | 8 mm |



Application:

The angle is set according the sine principle, using an end-gauge.

Fixation is achieved by side mounted pincers and by tightening the upper bearing clamps.



| Dimensions in mm | | | | | | Weight in kg |
|------------------|-----|-----|-----|----|-----|--------------|
| A | B | C | D | E | F | |
| 140 | 70 | 170 | 100 | 68 | 55 | 5.5 |
| 150 | 150 | 190 | 165 | 79 | 135 | 12.0 |
| 175 | 100 | 215 | 115 | 77 | 85 | 10.0 |
| 250 | 100 | 290 | 115 | 77 | 85 | 16.0 |
| 255 | 130 | 295 | 145 | 77 | 115 | 19.0 |
| 250 | 150 | 290 | 165 | 79 | 135 | 20.5 |
| 300 | 150 | 340 | 165 | 79 | 135 | 26.5 |
| 300 | 200 | 340 | 215 | 79 | 185 | 35.0 |
| 350 | 150 | 390 | 165 | 87 | 135 | 35.0 |
| 400 | 200 | 440 | 215 | 87 | 185 | 52.0 |
| 450 | 150 | 490 | 165 | 87 | 135 | 44.0 |
| 500 | 250 | 560 | 270 | 94 | 235 | 84.0 |
| 600 | 300 | 660 | 320 | 94 | 275 | 121.0 |

Execution with flushing holes available against price adder.

Other dimensions and executions – also with electro magnetic or other magnetic system – and all sizes of permanent magnetic chucks SAV 243.01 are available as sine table.

With mechanical adjustment SAV 245.10 the overall height is increased by approx. 40 mm at 0° setting.

Ordering example: Precision Sine Table SAV 245.01 - 300 x 150 - RF
 Ordering key: Name SAV - No. - A x B - Execution