

Carbon Brush Holder

SAV 248.84

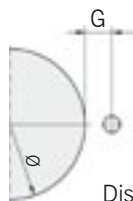
For electric power supply to circular electro-permanent magnetic chucks

Use:

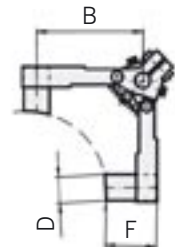
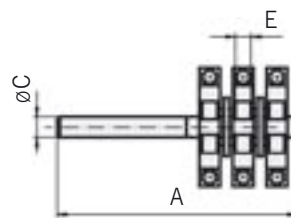
These carbon brush holders are required in combination with slip-ring bodies (SAV 248.85) to supply current to electro-permanent circular magnets. Available in 3 sizes, including terminals.

Features:

- bronze-carbon, spring loaded
- mounted on taps



Distance G to slip-ring body



For circular magnet - Ø	Chuck voltage in V	Control unit max. current in A	Number of contacts	Dimensions in mm							Weight in kg
				A	B	C	D	E	F	G	
to 800	210 / 360	30	3	140	40	10	12.5	6.3	20	27.0	0.17
to 900	360	60	3	140	40	10	12.5	6.3	20	25.0	0.17
to 1600	360	60 x 2	4	140	50	13	20	8.0	25	33.5	0.23

Ordering example: Carbon Brush Holder SAV 248.84 - 1600
 Ordering key: Name SAV - No. - Max. circular chuck diameter

Slip-Ring Body

SAV 248.85

For electric power supply to circular electro-permanent magnetic chucks

Use:

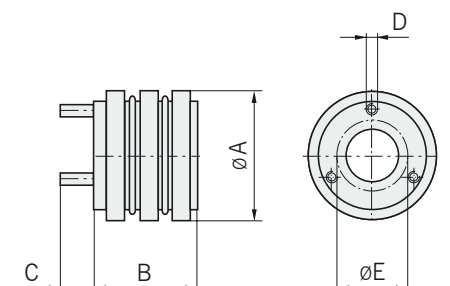
Slip-ring bodies are used in connection with carbon brushes to supply power to circular electro-permanent magnets. The slip-ring body can be mounted separately to the hollow machine spindle. While installing it must be assured that the insulation components do not come into contact with coolant or other fluids. Suitable protection must be provided to prevent contact with live components.

Mounting method:

- shrinking at 130 °C
- pressing with 0.5 mm oversize
- gluing

Features:

The slip-ring bodies are delivered with only one small centre-drilling. This has to be machined to suit the spindle of the machine, within range E.



For circular magnet - Ø	Chuck voltage in V	Control unit max. current in A	Number of contacts	Dimensions in mm					Max. r.p.m.	Weight in kg
				A	B	C	D	E		
to 800	210 / 360	30	3	70	61.5	20	M5	25 - 34	4100	1.1
to 1000	360	60	3	100	65.5	25	M8	30 - 52	3000	2.5
to 1600	360	60 x 2	4	100	79	25	M8	42 - 55	3000	3

Ordering example: Separate Slip Ring Holder SAV 248.85 - 1600
 Ordering key: Name SAV - No. - Max. circular chuck diameter