

## Permanent Magnetic "V"-Block

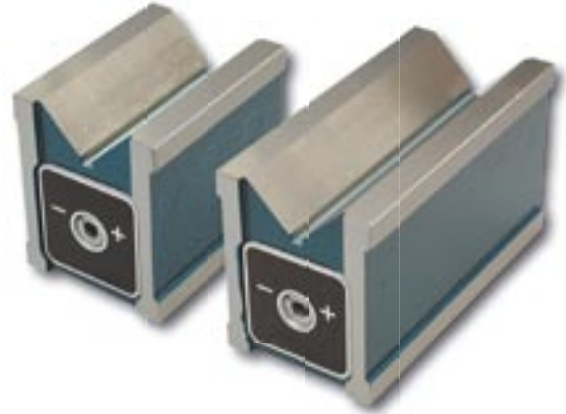
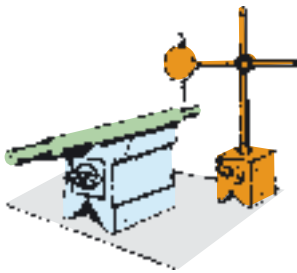
SAV 242.21

With 4 magnetic surfaces

### Features:

4 magnetic surfaces (top, bottom and two sides). ON/ OFF switch for top and bottom faces. Completely sealed. Available in wooden storage case SAV 539.02-HK2 against price adder.

Planar parallelism: < 0.01 mm



Length	Dimensions in mm			Nom. hold. force in daN	Weight in kg
	Width	Hight	Width of large block		
80	60	73	38	30	2.0
135	60	73	38	45	3.3

Ordering example: Permanent Magnetic „V“ Block SAV 242.21 - 135  
 Ordering key: Name SAV - No. - Length

## Permanent Magnetic "V"-Block

SAV 242.22

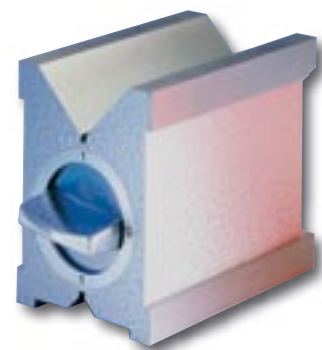
Single or in pairs

### Features:

2 magnetic contact surfaces (large "V"-block and opposite face), which are switched on and off simultaneously. Available single (S) or in pairs (P). Available in wooden storage case SAV 539.02 (for S) and SAV 539.04 (for P) against price adder.

Rectangularity: 0.004 mm

Planar parallelism: 0.004 mm



Length	Dimensions in mm			Nom. hold. force in „V“ in daN	Nom. hold. force to surface in daN	Weight in kg
	Width	Height	Workpiece diameter			
80	67	96	6 - 66	40	90	2.9
100	70	96	6 - 70	40	120	3.8



Ordering example: Permanent Magnetic „V“ Block SAV 242.22 - 100 - S  
 Ordering key: Name SAV - No. - Length - Single or pair