

Permanent Magnetic "V"-Block

SAV 242.28

Small version

Features:

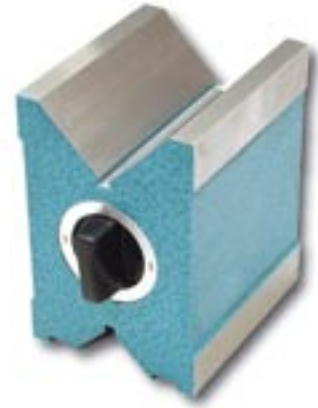
2 magnetic faces (large "V"-block and opposite face), which are switched on and off simultaneously (main and small prisms).

Available single (S) or in pairs (P).

Available in wooden storage case SAV 539.02 against price adder.

Planar parallelism: 0.008 mm

V-angle: 108°



Dimensions in mm				Workpiece diameter	Nom. holding force in daN	Weight in kg
Length	Width	Height				
70	45	65	6 - 35	60	1.35	

Ordering example: Permanent Magnetic „V“ Block SAV 242.28 - S

Ordering key: Name SAV - No. - Single or pair

Permanent Magnetic "V"-Block

SAV 242.29

In sealed execution, pair

Features:

3 magnetic faces ("V"-block and two side faces).

With two opposite switch positions, including separate key.

Strong switchable permanent magnetic block.

Ground together and supplied as a pair. Fully sealed.

Available in wooden storage case against price adder.



Dimensions in mm					Nom. holding force in daN	Weight in kg	Wooden storage case SAV No.
Length	Width	Height	Width of block	Workpiece diameter			
70	40	50	36	50	15	1.0	539.01
100	50	80	60	80	20	3.0	539.02
150	50	100	90	125	23	5.0	539.05

Ordering example: Permanent Magnetic „V“ Block SAV 242.29 - 100

Ordering key: Name SAV - No. - Length