

Laminated Circular Top Plate

SAV 248.05

For use on circular chuck with radial poles

Features:

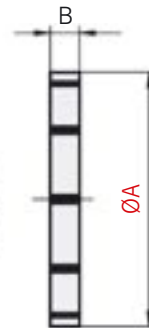
Can be machined to any required shape, or custom machined during manufacture. The maximum machined depth shall not exceed 12 mm.

Suitable for SAV 244.06.

Machinable depth: max. 12 mm



Dimensions in mm		Number of poles	Weight in kg
A	B		
150	20	10	3.0
200	20	12	5.0
250	20	16	8.0
300	25	16	14.0
350	25	20	19.0
400	25	20	24.5



Larger sizes available on request

Ordering example: Laminated Circular Top Plate SAV 248.05 - 150
 Ordering key: Name SAV - No. - A

Laminated Circular Top Plate

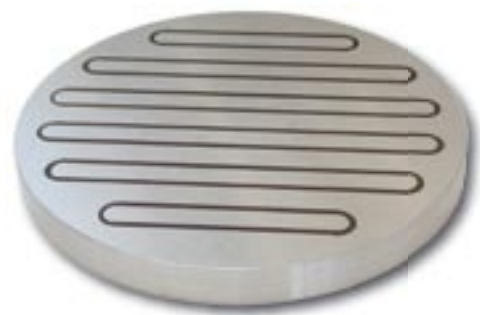
SAV 248.06

With radial pole arrangement

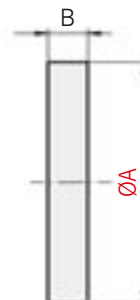
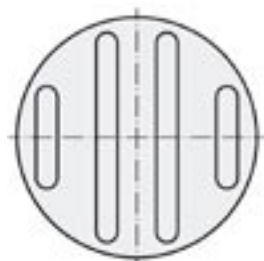
Features:

Can be machined to any required shape, or custom machined during manufacture. The maximum machined depth must not exceed 12 mm.

Suitable for SAV 244.08.



Dimensions in mm		Weight in kg
A	B	
150	20	2.8
180	20	4.0
200	20	4.9
250	20	7.7
300	20	11.1
350	20	15.1
400	25	24.7
450	25	31.3
500	25	38.6
600	25	55.6



Ordering example: Laminated Circular Top Plate SAV 248.06 - 600
 Ordering key: Name SAV - No. - A