



WORKHOLDING AND AUTOMATION

## Magnetic Stand

SAV 482.45

For measuring

### Use:

For measuring and testing on machines and equipment.

### Features:

Robust construction with high magnetic clamping force. Magnet is turned on and off by means of a rotary switch. "V" in base for clamping on cylindrical surfaces.



Overall height	Dimensions in mm					Thread	Weight in kg
	Column diameter	Magnetic base width	Magnetic base depth	Magnetic base height			
305	20	80	55	80	M 12	3.2	

Ordering example: **Magnetic Stand SAV 482.45**  
 Ordering key: Name SAV - No.

## Permanent Magnetic Base

SAV 482.70

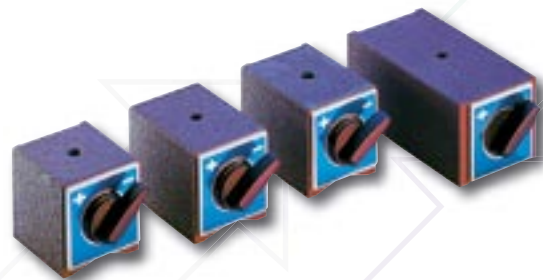
Switchable

### Use:

For supports, truing device, dial gauge stands etc.

### Features:

Permanent magnet with ON/OFF switching. 2 magnetic surfaces and a "V" groove. (SAV 482.70 - M 10 x 117 without "V" groove.)



Thread	Dimensions in mm			Nom. clamping force in daN	Weight in kg
	Length	Width	Height		
M 8	58	50	55	20	1.0
M 8	73	50	55	30	1.3
M 10	73	50	55	30	1.3
M 8	120	60	52	50	2.5
M 10	117	60	55	40	2.0

Ordering example: **Permanent Magnetic Base SAV 482.70 - M 10 x 117**  
 Ordering key: Name SAV - No. - Thread x Length