

## Hydro Machine Vice

SAV 233.70

For high clamping forces

### Application:

The most cost effective clamping system for die and mould making, for the construction of jigs and fixtures as well as for normal production applications.

Especially suitable for use on conventional machine.

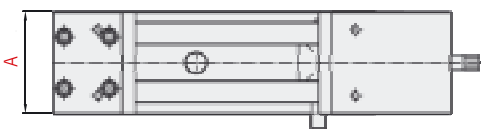
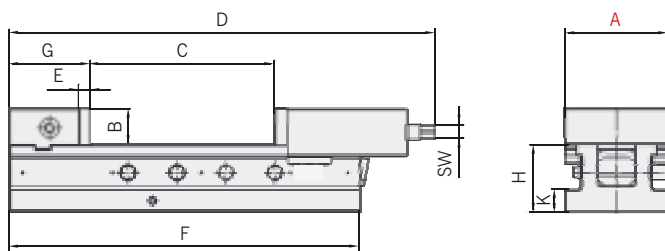
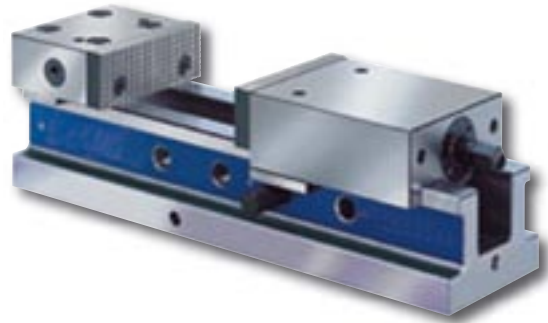
In combination with swivel base (optional extra) the vice can be swivelled in any desired position.

### Product specification:

- slide and base from steel, guideways hardened and ground
- compact design
- infinitely variable clamping force with mechanical-hydraulic-system
- high precision
- quick adjustment with socket pin
- mounting threads for workpiece-stop (optional extra)
- angular drive (optional extra) possible
- lots of standard and special jaws

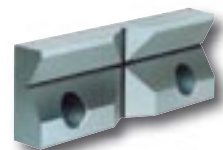
### Scope of supply:

- reversible standard jaws (plain / serrated)
- crank handle
- operating instructions



### Optional extras:

- wide range of standard jaws SAV 233.80
- swivel base SAV 233.83-A
- quick insert jaws SAV 233.81



Dimensions in mm											Max. clamping force in kN	Weight in kg
A	B*	C	D	E*	F*	G	H*	K	SW			
100	380	205	464	34	13	80	70	24	14	25	18.5	
125	430	225	526	45	15	100	82	27	17	40	31.5	
160	550	309	684	54	18	120	95	27	19	50	58.5	
160L	750	509	884	54	18	120	95	27	19	50	75.0	

\*Tolerance  $\pm 0.01$

Ordering example: Hydro Machine Vice SAV 233.70 - 125

Ordering key: Name SAV-No. - A