

Standard Jaws

SAV 233.80

For use with hydro machine vice SAV 233.70 and 233.72

Application:

Variation jaws for different clamping jobs with hydro machine vice type SAV 233.70 and 233.72

Standard jaw

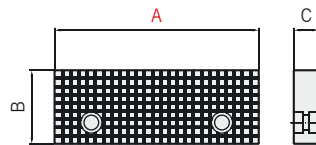
SAV 233.80-SB-A

Both sides for use:
one side cross ribbed;
other side smooth

Tolerance for width
and height:
± 0.01 mm



Dimensions in mm		
A	B	C
100	34	13
125	45	15
160	54	18

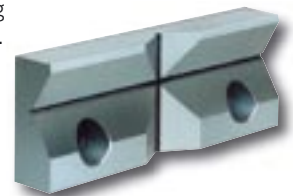


Vee jaw

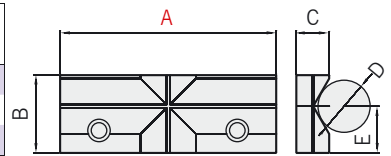
SAV 233.80-PR-A

Horizontal or vertical clamping
of cylindrical workpieces.
Use as single jaw for 3-point-
clamping.

Tolerance for width
and height:
± 0.01 mm



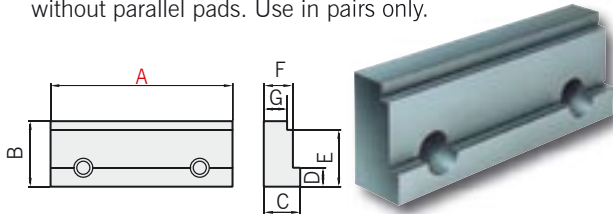
Dimensions in mm				
A	B	C	D	E
100	34	17	8 - 35	19
125	45	19	10 - 50	27
160	54	21	12 - 60	32



Step jaw insert

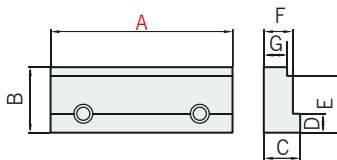
SAV 233.80-PSB-A

For clamping rectangular workpieces
without parallel pads. Use in pairs only.



Dimensions in mm						
A	B	C	D	E	F	G
100	34	19	10	29	15	11
125	45	25	13	39	20	16
160	54	25	15	45	20	16

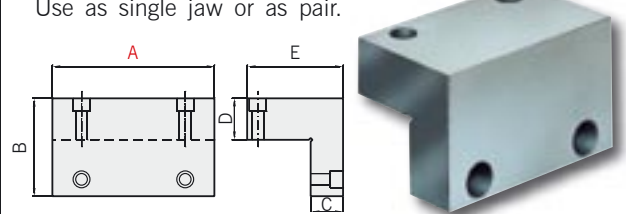
Tolerance for width
and height:
± 0.01 mm



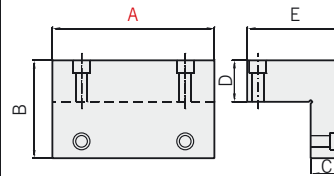
Clamping jaw extra high

SAV 233.80-SBH-A

Clamping of high workpieces.
Use as single jaw or as pair.



Dimensions in mm				
A	B	C	D	E
100	58.0	25	25	60
125	75.5	32	32	74
160	92.5	40	40	100



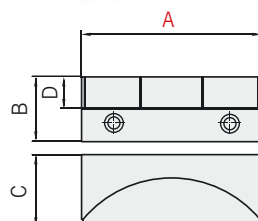
Pendulum jaw

SAV 233.80-PB-A

Clamping of one workpiece
with non-parallel surfaces or
two workpieces with different
tolerances.
For use as single jaw.



Dimensions in mm			
A	B	C	D
100	34	35	16
125	45	50	22
160	54	55	26

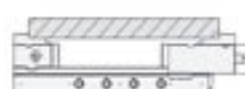


Step jaw insert

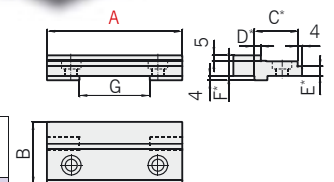
SAV 233.80-ASB-A

**Only for use with hydro
machine vice SAV 233.72.**

For large capacity.
For clamping range refer to
data sheet SAV 233.72.



Dimensions in mm						
A	B	C	D	E	F	G
100	48	34	6	6.5	11.5	60
125	58	40	6	9.0	14.0	65
160	64	43	8	12.0	17.0	88



*Tolerance for width and
height: ± 0.01 mm

Ordering example: **Standard Jaws SAV 233.80 - PR - 125**
Ordering key: Name SAV-No. - Type - A