



WORKHOLDING AND AUTOMATION

Quick insert jaw system Q.I.S.

SAV 233.81

For use with hydro machine vice SAV 233.70 and 233.72

**Application:**

The jaw inserts can be changed in a few seconds. Downthrust effect and defined zero point with the workpiece in clamped position, ensure constant reference points and consequently high workpiece precision.

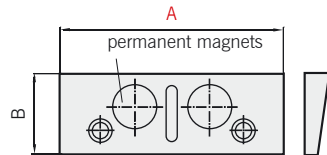
**Q.I.S. base jaw**

**SAV 233.81-GB-A**

With permanent magnets to fix the jaw inserts, including fastening screws.



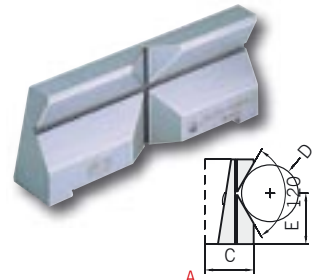
Dimensions in mm	
A	B
100	34
125	45
160	54



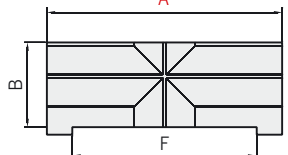
**Q.I.S. jaw insert prismatic**

**SAV 233.81-PWB-A**

Horizontal or vertical clamping of cylindrical workpieces. With socket to the guideways for centric positioning. Use as single jaw for 3-point-clamping.



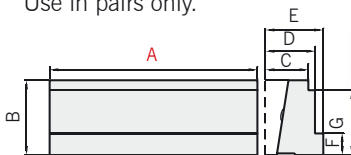
Dimensions in mm					
A	B	C	D	E	F
100	34	28.0	8 - 35	19	78
125	45	34.2	10 - 50	27	98
160	54	37.0	12 - 60	32	125



**Q.I.S. step jaw insert**

**SAV 233.81-SWB-A**

For clamping rectangular workpieces without parallel pads. Use in pairs only.

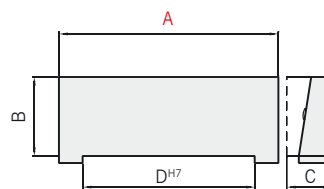
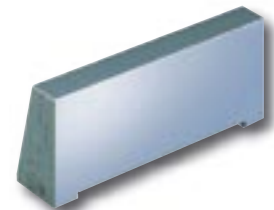


Dimensions in mm						
A	B	C	D	E	F	G
100	34	21	25	29	10	29
125	45	26	30	35	13	39
160	54	31	35	40	15	45

**Q.I.S. jaw insert soft**

**SAV 233.81-WBW-A**

16MnCr5  
For preparing special jaws.

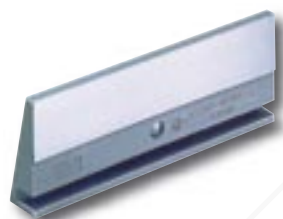


Dimensions in mm			
A	B	C	D
100	34	30.0	78
125	45	36.5	98
160	54	47.0	125

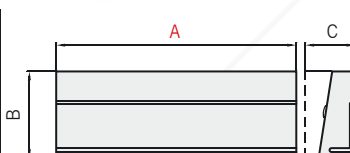
**Q.I.S. jaw insert plain**

**SAV 233.81-WBG-A**

For clamping rectangular workpieces without parallel pads.



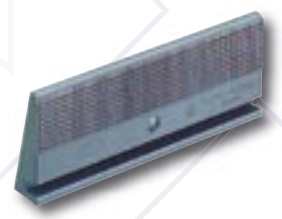
Dimensions in mm		
A	B	C
100	34	21
125	45	26
160	54	31



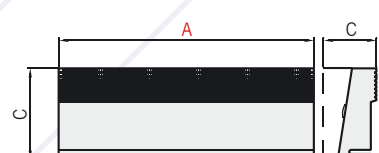
**Q.I.S. jaw insert serrated**

**SAV 233.81-WBR-A**

Jaw insert serrated, for workpieces with non-machined clamping surfaces.



Dimensions in mm		
A	B	C
100	34	21
125	45	26
160	54	31



Ordering example: Standard Jaws SAV 233.81 - GB - 125  
Ordering key: Name SAV-No. - Type - A